

For more information on XCMG products, dealer services,
and industry solutions, visit us on the web at www.xcmg.com

1st Jan 2014 XCMG
All Rights Reserved

Materials and specifications are subject to change without notice.
Featured machines in photos may include additional equipment.
See your XCMG dealer for available options.

XCMG, WWW.XCMG.COM, their respective logos, "XCMG For Your Success",
as well as corporate and product identity used herein,
are trademarks of XCMG and may not be used without permission.



XUZHOU CONSTRUCTION MACHINERY GROUP IMP. & EXP. CO., LTD



XCMG Headquarters, Xuzhou Economic Development Zone,
Jiangsu, China 221004



(+86-516) 87739230



XCMG Regional Departments:

West Asia & North Africa	(+86-516) 87739251	87739202	87739223
Asia-Pacific	(+86-516) 87739500	87739529	87739233
Central Asia	(+86-516) 87739218	87739239	87739510
North America	(+86-516) 87739285	87739551	87739713
South America	(+86-516) 87739196	87739714	87739187
Africa	(+86-516) 87739501	87739222	87739709
Europe	(+86-516) 87739238	87739271	87739228



export@xcmg.com



WWW.XCMG.COM

XCMG For Your Success

XS203J	
Operating Weight (Kg)	20000
Rolling Width (mm)	2130
Static Linear Load (N/cm)	470
Engine Model	Shanghai Diesel Engine SC8D175.2G2B1
Engine Rated Output (Kw/r/min)	128/1800

XS203J/XS223J

SINGLE DRUM VIBRATORY ROLLER

XS203J/XS223J

SINGLE DRUM VIBRATORY ROLLER

Product Description

The XS203J/XS223J is a heavy duty full hydraulic vibration roller. As a new generation XCMG roller, the machine can offer enhanced performance, cooling capacity, reliability and intelligent control.

Performance Characteristics

Optimized design

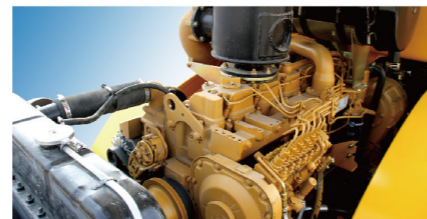
The large-arc front car frame with streamlined design provides aesthetic appeal and make the vehicle instantly recognizable as a XCMG machine.



Noise reduction and green

The vehicle uses a Shanghai SC8D direct injection turbo low-speed diesel engine with optimized power matching to achieve optimal fuel consumption that provides saving of 10%.

The engine features low noise emission and enhanced sealing performance that reduce machine noise by 2dB.



Comfortable operation

The electrohydraulic gearbox with patented electronic shift lever ensures brings the performance of the mechanical drum roller close to that of a hydraulic machine.

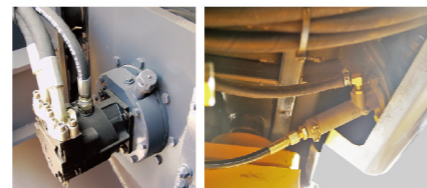
The cab is fully sealed to provide a good operating environment.



Highly reliable

The gearbox features a buffer protection system. All key components have been upgraded to ensure more stability and reliability.

The closed hydraulic vibration system includes heavy duty imported plunger pump and motor that ensures long service life, stable movement and braking, as well as high compaction quality.



Efficient compaction performance

The dual frequency, dual amplitude system can meet the requirements of different operating conditions.

The drive system is optimized to achieve a optimal compacting speed, resulting in improved operational efficiency of 8%.



Comprehensive protective measures

The caliper disc brake and belt parking brake work independently to ensure safe and reliable operation..

While the roller is in operation, the hinge locking system is activated to secure the front and rear parts, ensuring safe transportation.

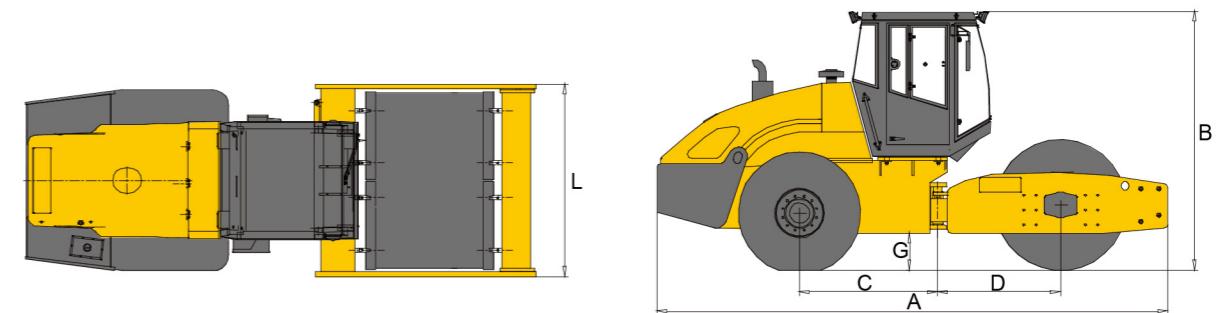


Easy maintenance

The front tilting hood with large opening angle provide convenient access for maintenance. The hydraulic position lock system ensures safety for operators.



Overall Dimensions (mm)



Model	A	B	C	D	G	L
XS203J	6220	3200	1680	1500	448	2430
XS223J	6220	3200	1680	1500	448	2430

Main Technical Parameters

XS203J

XS223J

Item		XS203J	XS223J	Unit
Weights	Operating Weight	20000	22000	kg
	Load applied on front drum	10000	11000	kg
Driving Characteristics	Gear I	2.95	2.95	km/h
	Gear II	5.78	5.78	km/h
	Gear III	9.4	9.4	km/h
	Theoretical Gradeability	30	30	%
Driving Characteristics	Min. Outer Turning Radius	6500	6500	mm
	Steering Angle	±33	±33	°
	Swing Angle	±10	±10	°
Compaction Characteristics	Static Linear Load	470	516	N/cm
	Vibration Frequency(L/H)	33/28	33/28	Hz
	Nominal Amplitude (H/L)	1.9/0.95	1.86/0.93	mm
	Exciting Force @ H/L Amplitude	353/245	374/290	kN
	Drum Diameter	1600	1600	mm
	Drum Width	2130	2130	mm
Engine	Engine Model	Shanghai Diesel Engine SC8D175.2G2B1 Shanghai Diesel Engine SC8D185.2G2B1		
	Rated Power @ 1800 r/min	128	136	kW
	Engine oil Consumption	205	205	g/kW.h
Service Refill Capacities	Hydraulic Tank Capacity	170	170	L
	Fuel tank Capacity	310	310	L