

# XR460D 旋挖钻机 XR460D Rotary Drilling Rig

## XR系列 旋挖钻机

XR Series Rotary Drilling Rig

### 性能特点

采用旋挖钻机专用液压伸缩式履带底盘，满足超强的稳定性和运输的便捷性；

采用进口康明斯发动机，动力强劲，足够的功率储备满足高原施工，噪音、排放满足欧Ⅲ标准；

采用大三角变幅结构，具有超强的稳定性；  
超大的钻桅截面，减低钻桅在施工时的晃动量，提高施工质量；  
加装了钻杆托架，降低施工时钻杆晃动量，保证钻孔垂直度；  
液压系统采用负荷传感技术，使液压系统效率更高，更节能；  
可配置多种钻具，实现干湿两种钻孔作业，适用于多种地基的灌注桩钻孔工程。钻杆采用机锁式或摩擦阻式伸缩结构，通过牙嵌或摩擦板传递扭矩给钻具，传递扭矩大、效率高；

主卷扬钢丝绳采用单层缠绕，操作方便自如，大大的提高了钢丝绳的使用寿命。并在主卷扬上设有钻孔深度检测装置，单层绕绳使深度检测更准确、方便维修；

可选配卷扬加压，行程10米，卷扬加压最大加压力可达30吨；  
动力头采用国际知名公司的进口减速机及马达，钻进扭矩大，工作效率高；

安装了观察主卷的红外摄像头，在驾驶室就能昼夜观察主卷钢丝绳使用情况。

标配集中润滑系统，维护保养更便捷。

### Performance Characteristics

Super stability and convenience of transportation, for use the special hydraulic and telescopic crawling chassis of rotary drilling rig.

The import Cummins engine provides strong power, and The noise and emission meet Europe III standard.

The design of big trigonal luffing mechanism bring a significant improvement in stability.

The quality of work is enhanced by increase the mast section to reduce mechanical wobble of the mast.

Ensure verticality of the hole by add a bracket for drill pipe.  
High-performance and more energy-efficient, due to the technology of load-sensing hydraulic system.

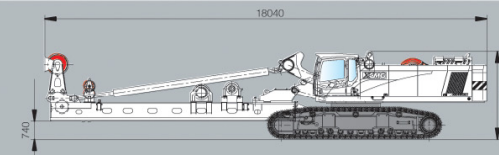
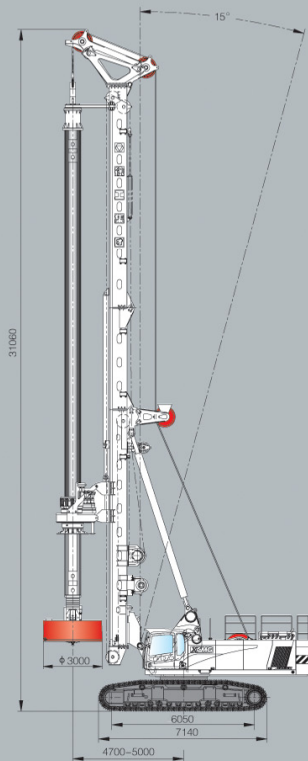
It can be equipped with a variety of drilling tools to realize drought and wet working.

The single winding roll of main winch enhance the life of rope and the precision of depth detection.

It can choose winch pull-down. The travel is 10 m, The Max. force of winch pull-down is 300kN.

Highly effective drilling torques, due to the robust drilling head, which choose the import motor and reducer manufactured by internationally renowned company.

The worker can observe the rope in cab day and night by infrared camera  
Standard centralized lubricating system, allowing easier maintenance.



### XR460D 旋挖钻机主要技术参数

Main Technical Data of XR Series Multi-functional Combined Rotary Drilling Rig

主要技术参数 Main Technical Specification				
发动机 Engine	型号 Model		QSX15-C600	
	额定功率 Rated Power	kW	447	
动力头 Rotary Drive	最大输出扭矩 Max. output torque	kN·m	460	
	转速 Rotary speed	r/min	6-20	
最大钻孔直径 Max. Drilling Diameter		mm	φ3000, 特配φ3500	
最大钻孔深度 Max. Drilling Depth		m	120	
加压油缸 Pull-Down Cylinder	最大压力 Max. pull-down piston push	kN	300	
	最大提升力 Max. pull-down piston pull	kN	400	
	最大行程 Max. pull-down piston stroke	m	6.0	
加压卷扬 Crowd winch	最大压力 Max. pull-down piston push	kN	300	
	最大提升力 Max. pull-down piston pull	kN	400	
	最大行程 Max. pull-down piston stroke	m	10	
主卷扬 Main Winch	最大提升力 Max. Pulling force	kN	520	
	最大卷扬速度 Max. line speed	m/min	60	
副卷扬 Auxiliary Winch	最大提升力 Max. Pulling force	kN	100	
	最大卷扬速度 Max. line speed	m/min	65	
钻桅倾度 侧向 / 前倾 / 后倾 Side/forwards/backwards			±5° / 5° / 15°	
底盘 Undercarriage	最大行走速度 Max. traveling speed	km/h	1	
	最大爬坡度 Max. grade ability	%	35	
	最小离地点间隙 Min. Clearance	mm	500	
	履带板宽度 Track shoe width	mm	1000	
履带最大总宽 Distance between tracks		mm	4050-5500	
液压系统 Hydraulic System		工作压力 Working pressure	Mpa	33
整机工作质量 Overall Drilling Weight		t	158	
外形尺寸 Dimension	工作状态 Working condition	mm	10750 × 5500 × 31060	
	运输状态 Transportation condition	mm	18040 × 4050 × 3615	



# XR460D