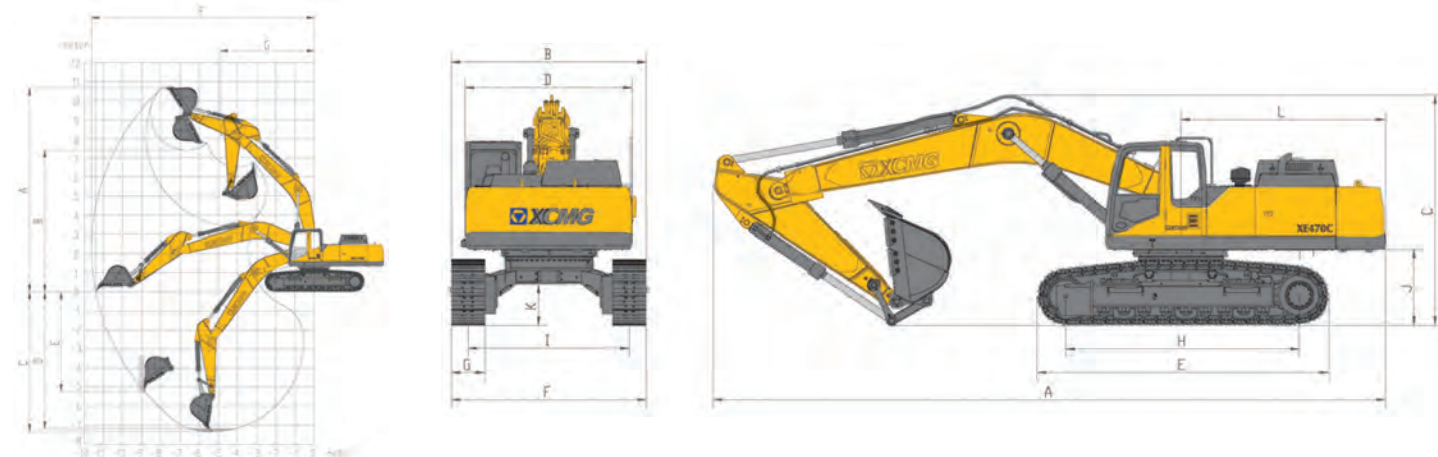


XE470C

Hydraulic Excavator

Overall dimensions and working range



Main Technical Parameters

		Unit	Parameters
Model	Operating weight	kg	46100
	Bucket capacity	m ³	2.1-2.5
Engine	Engine model	/	Cummins QSM11
	Direct injection	/	√
	4 x strokes	/	√
	Water cooling	/	√
	Turbocharging	/	√
	A/A Air-air intercool	/	√
	Cylinders	/	6
	Output power of engine	kW/rpm	250/2000
Main performance	Max. torque / speed	N.m/rpm	1790/1400
	Displacement	L	11
	Travel speed	km/h	5.4/3.2
	Slewing speed	r/min	9
	Gradient capability	°	30°
	Ground pressure	kPa	82.7
	Digging capacity of bucket	kN	284
	Digging capacity of bucket rod	kN	236
Hydraulic system	Max. traction force	kN	338
	Main pump	/	Two plunger pumps
	Rated flow of main pump	L/min	2x360
	Pressure of main safety valve	MPa	31.4/34.3
	Pressure of traveling system	MPa	34.3
Oil volume	Pressure of swing system	MPa	28.4
	Pressure of pilot system	MPa	3.9
	Fuel tank capacity	L	650
	Hydraulic tank capacity	L	360
	Engine oil volume	L	38

		Unit	Parameters
Appearance size	A Total length	mm	12032
	B Total width	mm	3580
	C Total height	mm	3842
	D Width of rotary table	mm	2950
	E Length of track	mm	5220
	F Total width of chassis	mm	3580
	G Width of track	mm	600
	H Wheelbase of track	mm	4180
	I Track gauge	mm	2392/2890
	J Counterweight ground clearance	mm	1360
Working radius	K Min. ground clearance	mm	703 (Tooth height not included)
	L Min. tail swing radius	mm	3665
	A Max. digging height	mm	10675
	B Max. unloading height	mm	7409
	C Max. digging depth	mm	7337
	D 8-feet digging depth under ground	mm	7177
	E Max. vertical digging depth	mm	5225
	F Max. digging radius	mm	11631
	G Max. swing radius	mm	4909
	Standard configuration	Boom length	mm
Length of bucket rod		mm	2900
Bucket capacity		m ³	2.2 Rock bucket
Optional	Boom length	mm	7060
	Length of bucket rod	mm	3380/2500
	Bucket capacity	m ³	2.1 2.3 Rock bucket 2.5 Earthmoving bucket

For more information on XCMG products, dealer services, and industry solutions, visit us on the web at www.xcmg.com

1st Jan 2014 XCMG
All Rights Reserved

Materials and specifications are subject to change without notice. Featured machines in photos may include additional equipment. See your XCMG dealer for available options.

XCMG, WWW.XCMG.COM, their respective logos, "XCMG For Your Success", as well as the corporate and product identity used herein, are trademarks of XCMG and may not be used without permission.



XCMG For Your Success



XUZHOU CONSTRUCTION MACHINERY GROUP IMP.& EXP.CO., LTD



XCMG Headquarters, Xuzhou Economic Development Zone, Jiangsu, China 221004



(+86-516) 87739230



XCMG Regional Departments:

West Asia & North Africa	(+86-516) 87739251	87739202	87739223
Asia-Pacific	(+86-516) 87739500	87739529	87739233
Central Asia	(+86-516) 87739218	87739239	87739510
North America	(+86-516) 87739285	87739551	87739713
South America	(+86-516) 87739196	87739714	87739187
Africa	(+86-516) 87739501	87739222	87739709
Europe	(+86-516) 87739238	87739271	87739228



export@xcmg.com



WWW.XCMG.COM

Bucket Capacity (m ³)	2.1-2.5
Operating Weight (Kg)	46100
Rated Engine Power (Kw/rpm)	250/2000
Max. Digging Height (mm)	10675
Max. Digging Radius (mm)	11631

XE470C

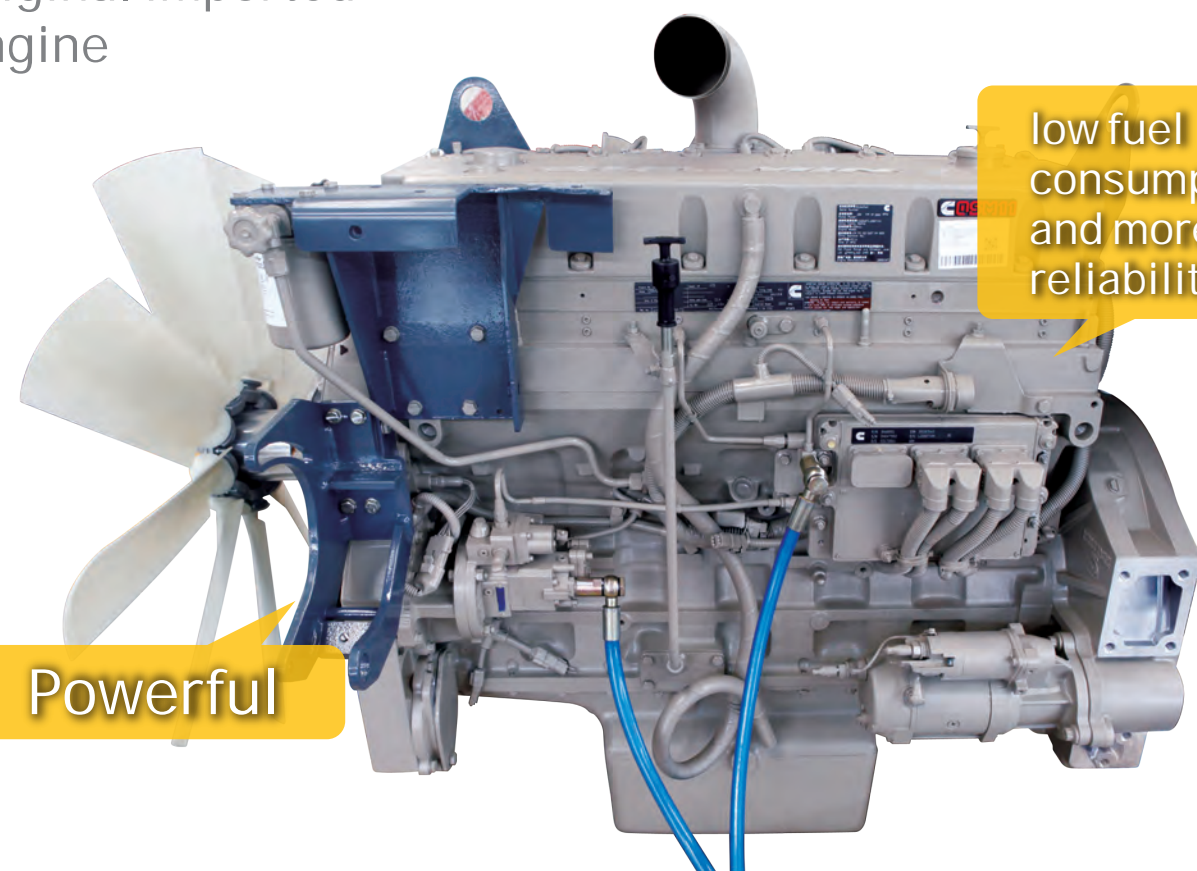
Hydraulic Excavator

XE470C

Hydraulic Excavator

Optimum design; Peak performance

Original imported engine



low fuel consumption, and more reliability.

Powerful

Engine

An Imported new generation Cummins direct-injection, six-cylinder, four-stroke, and turbocharged engine is used, which is characterized by powerful operation, low noise, low fuel consumption, and better reliability.

Hydraulic system

A mature and reliable negative-flow control system is used, with double-pump confluence and a multi-way valve applied to provide flow distribution to all action cylinders, providing powerful digging capacity and maximizing operational efficiency.



Fuel filtration

A new filter is used to improve filtering performance, with course, semi-fine, and fine filter models to ensure fuel quality, thus improving operating reliability in harsh conditions and making the machine more suitable for domestic areas.



Air filter

A high-capacity air filter is used, featuring a long life and easy maintenance, with protective mesh used at the intake port such that air quality can be ensured in dusty environments, guaranteeing effective operation of the engine.



High quality driving enjoyment

Wider driving space

A new cab with more space is designed to create a pleasant working environment for the operator, with improved pedals to make operation easier and more comfortable.



Sturdy, efficient and durable

Lower traveling part

Reliable and durable four-wheel, one-belt, and tensioner assemblies equipped with a high-performance traveling motor and reducer are used to ensure powerful traveling traction and less ground pressure such that smooth traveling is possible in harsh environs



Rail clamp

Three rail clamps are mounted at one side of the track with deflection of the track chain rail reduced when steering; furthermore, a lengthened track and nine thrust rollers on one side are installed to improve overall stability, providing full digging capacity. A reinforced track shoe is used, effectively improving durability when digging under a heavy load.



Bucket

The bucket adopts bucket teeth manufactured using the famous U.S. ESCO's patented technology to ensure wear resistance and service life improved more than two-fold.



Convenient Maintenance

The oil filter, pilot filter, fuel filter, oil-water separator, and air filter, which are accessible for easy maintenance, are arranged on the ground for direct inspection and replacement, thus reducing maintenance time and improving work efficiency.



Optional parts

According to the demands of user, other operating devices can be configured, such as: a long boom, long bucket rod, long digging bucket, grab hopper, breaker, and hydraulic shear etc.