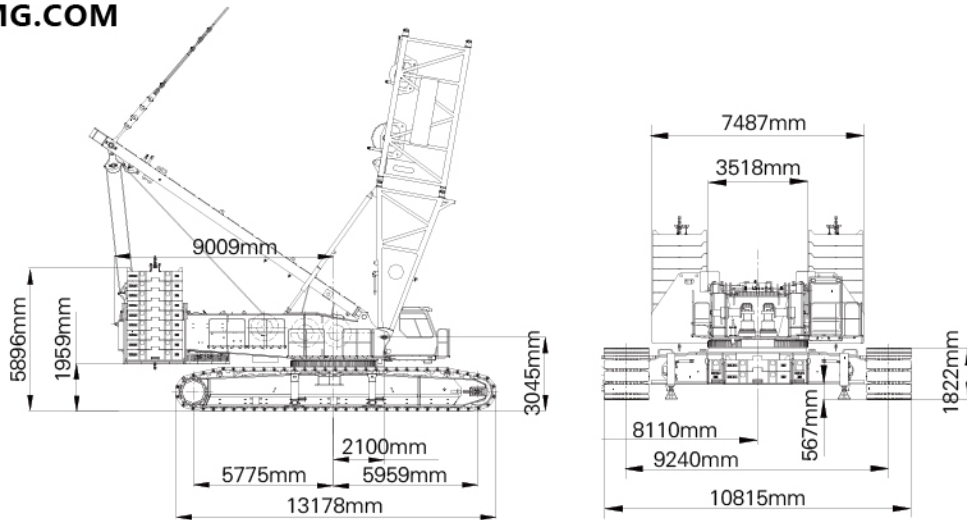


Crawler Crane

QUY700





Configuration

Name	Model (Manufacturer)
Main pump 1,2,3	A11VLO190EP2D, Rexroth
Steering pump	A4VG125EP2D, Rexroth
Constant pressure pump	A10VO45DRG, Rexroth
Auxiliary pump/gear pump	AZ-PGF-1X-045/022L, Rexroth
Main valve 1,2,3	M7, Rexroth
Engine	TAD1642VE, VOLVO
Coupling	Transfer-case belt, Stiebel

Mechanism		Model (Manufacturer)	
Hoisting	Winch reduction	GFT110W3B96-09	Rexroth
	Hydraulic motor	A6VM200EP2D	
	Balance valve	538060001	
Main derricking	Winch reduction	GFT110W3B174-13	
	Hydraulic motor	A2FM107/61W	
	Balance valve	BVD25W38L	
SL/Tower derricking	Winch reduction	GFT110W3B115-13	
	Hydraulic motor	A6VM160EP2D/63W	
	Balance valve	BVD25W38L	
Steering	Steering reduction	GFB80T3B186-09	
	Hydraulic motor	A2FE80/61W	
Traveling	Traveling reduction	F700/377/A6VM250/MB	
	Hydraulic motor	A6VM250/MB	

Technical Data	Unit	QY700
Basic parameters		
Overall weight	t	530
Max. lifting capacity	t	700
Max. Lifting torque	t.m	8040
Standard mode		
Heavy boom length	m	24~84
Light boom length	m	66~102
Tower jib length	m	24~84
SL mode		
Heavy boom length	m	36~96
Light boom length	m	90~138
Tower jib length	m	24~96
Special jib length	m	12
Speed		
Winch max. Single line speed	m/min	130
Boom luffing winch max. Single line speed	m/min	2×58
Max. Steering speed	r/min	0.65
Max. Traveling speed	km/h	1.0
Performance parameters		
Gradeability		30%
Mean ground pressure	MPa	0.146
Engine		
Rated power	kw	494
Rated speed	R/min	1800
Max. Output torque	Nm/r/min	3150/1200



Please contact with our district agent:

Materials and specifications are subject to change without notice.