

www.xcmg.com

QUY500W履带起重机

QUY500W CRAWLER CRANE

本印刷品所包含的数据,会随着产品的不断升级而改变,请以实际产品为准
Pictures and data in this catalog will change with the update and modification of products, so please take the actual vehicle as reference.

徐工集团 工程机械股份有限公司建设机械分公司

XCMG, CONSTRUCTION MACHINERY CO., LTD. BUILDING MACHINERY CO.

地址: 江苏省徐州市桃山路19号

邮编 (Post Code): 221002

Add: No. 19 Taoshan Road, Xuzhou, Jiangsu Province, China

销售电话 (Sales Tel): 0516-87892099

销售传真 (Sales Fax): 0516-87892015

服务电话 (Service Tel): 0516-87892088

服务传真 (Service Fax): 0516-87892055

备件销售电话 (Spare Parts Tel): 0516-87892511

备件传真 (Spare Parts Fax): 0516-87892510

服务质量投诉电话 (Quality Inquiry Tel): 0516-87892503

统一客户热线: 400-110-9999

请垂询


CONTACT



QUY500W履带起重机

QUY500W CRAWLER CRANE



 徐工集团 工程机械股份有限公司建设机械分公司

XCMG, CONSTRUCTION MACHINERY CO., LTD. BUILDING MACHINERY CO.

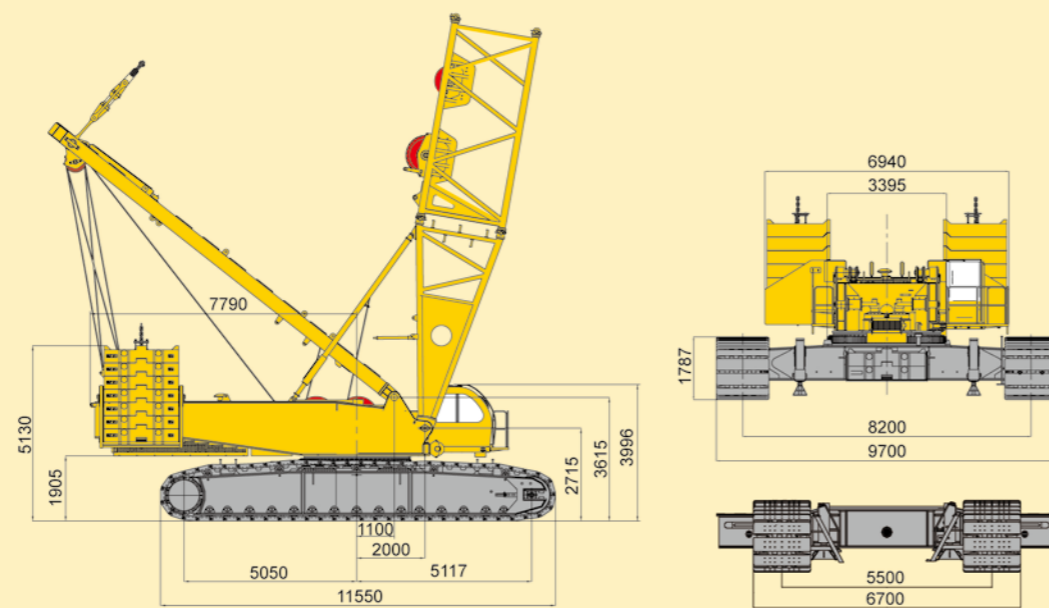
QUY500W履带起重机主要技术参数 Main Technical Parameters of QUY500W

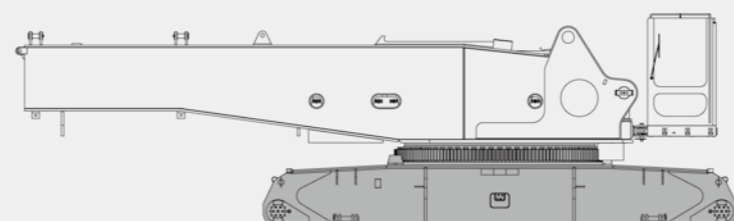
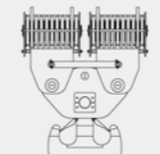
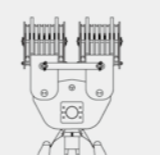
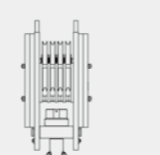
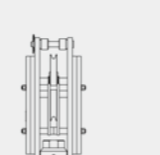


主要零部件 Main Parts

目录 CONTENTS

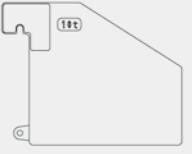

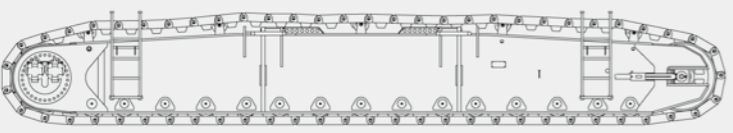
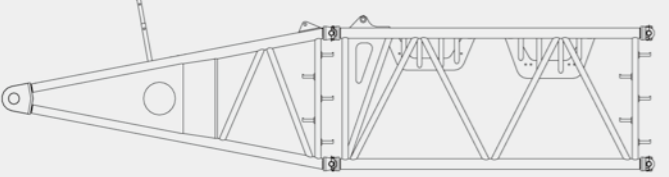
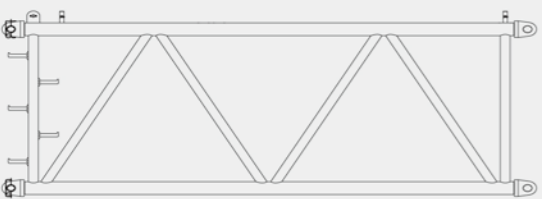
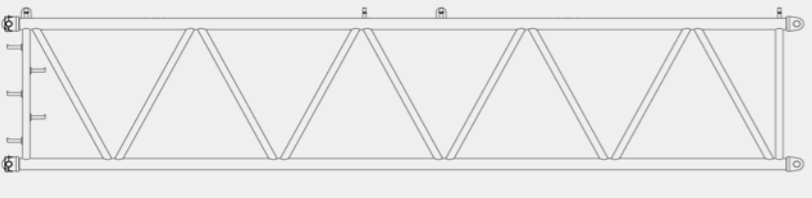
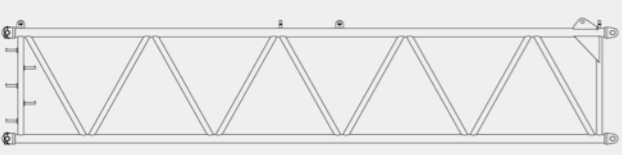
- 主要零部件 Main Parts 1
- 详细介绍 Detailed Introduction 4
- 自拆装 Self Assembly & Disassembly 8
- 工况示意图 Working Mode Illustration 9
- 标准工况重型主臂臂节组合/重型主臂 Standard Mode Heavy Boom Combinations/Heavy Boom 12
- 标准工况重型主臂作业范围 Standard Mode Heavy Boom Working Area 13
- 标准工况重型主臂载荷表 Standard Mode Heavy Boom Lifting Load Chart ... 14
- 标准工况专用副臂 Standard Mode Special Jib 15
- 标准工况专用副臂作业范围 Standard Mode Special Jib Working Area 16
- 标准工况专用副臂载荷表 Standard Mode Special Jib Lifting Load Chart 17
- 加强工况专用副臂作业范围 Strengthen Mode Special Jib Working Area 18
- 加强工况专用副臂载荷表 Strengthen Mode Special Jib Lifting Load Chart 19
- 载荷表说明 Notes On Lifting Load Chart 20

项目 Items		单位 Unit	数值 Data
最大额定起重量 Max. rated lifting capacity	标准工况 Standard mode	重型主臂 Heavy boom	t 500
	加强工况 Strengthen mode	专用副臂 Special jib	t 95
最大起重力矩 Max. load moment	标准工况 Standard mode	重型主臂 Heavy boom	t.m 2700
		专用副臂 Special jib	t.m 1710
	加强工况 Strengthen mode	专用副臂 Special jib	t.m 1890
尺寸参数 Dimensions	主臂长度 Boom length		m 24~84
	主臂变幅角度 Boom elevating angle		° -3~85°
	专用副臂长度 Special jib length		m 12
速度参数 Speed parameters	起升机构最大单绳速度 (空载、第六层) Winch mechanism max. single line speed (no load, at 5th layer)		m/min 130
	主臂变幅机构最大单绳速度 (第一层) Elevating mechanism max. single line speed(no load, at 1th layer)		m/min 2×50
	最大回转速度 Max. slewing speed		r/min 1.0
	最高行驶速度 Max. traveling speed		km/h 0.95
	爬坡度 Grade ability		30%
平均接地比压 Mean ground pressure		MPa 0.132	
发动机功率 Engine output power		kW 383	
整机重量 (24m重型主臂、500t吊钩) Weight machine(24m heavy boom, 500t hook)		t 415	
运输状态单件最大质量 Max. mass of single unit in travel configuration		t 60	
运输状态单件 (转台) 最大尺寸(长×宽×高) Max. dimension of single unit turntable in travel configuration (L×W×H)		m 11.6×3.4×3.4	

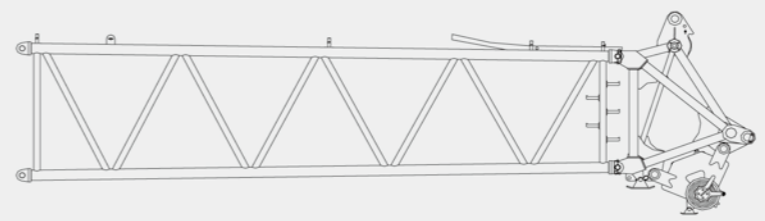
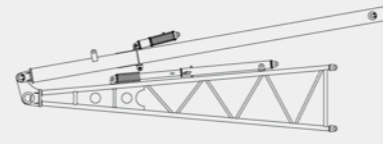
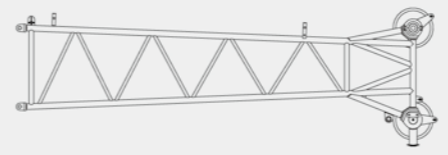
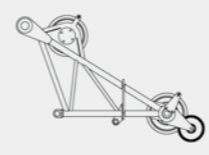


	主机 Basic Machine × 1 长L 11600mm 宽W 3390mm 高H 3400mm 重量 Weight 60000kg
	500t吊钩 Capacity Hook Block × 1 长L 2840mm 宽W 2330mm 高H 880mm 重量 Weight 9654kg
	300t吊钩 Capacity Hook Block × 1 长L 2420mm 宽W 1740mm 高H 880mm 重量 Weight 6472kg
	100t吊钩 Capacity Hook Block × 1 长L 1890mm 宽W 980mm 高H 780mm 重量 Weight 3850kg
	50t吊钩 Capacity Hook Block × 1 长L 1710mm 宽W 900mm 高H 510mm 重量 Weight 1705kg
	12t吊钩 Capacity Hook Block × 1 长L 1010mm 宽W 600mm 高H 600mm 重量 Weight 921kg
	平衡重块 Counterweight × 20 长L 2180mm 宽W 1800mm 高H 510mm 重量 Weight 10000kg

主要零部件 Main Parts

	上车平衡重箱 Upper Counterweight Box × 2 长L 2450mm 宽W 2310mm 高H 1830mm 重量 Weight 10000kg
	车身配重箱 Car-body Counterweight Box × 2 长L 2460mm 宽W 2070mm 高H 850mm 重量 Weight 1314kg
	履带架 Crawler × 2 长L 11560mm 宽W 2000mm 高H 1790mm 重量 Weight 40000kg
	主臂6m底节臂+6m卷扬节 Boom Butt + Winch Section × 1 长L 12550mm 宽W 2970mm 高H 3270mm 重量 Weight 17700kg
	主臂6m中间节 Boom Insert × 2 长L 6210mm 宽W 2970mm 高H 2800mm 重量 Weight 2937kg
	主臂12m中间节 Boom Insert × 3 长L 12210mm 宽W 2970mm 高H 2800mm 重量 Weight 5000kg
	主臂12m拉板节 Boom Pendant Section × 1 长L 12210mm 宽W 2850mm 高H 2860mm 重量 Weight 5260kg

主要零部件 Main Parts

	主臂10.5m锥节臂+臂头 Boom Taper Section + Boom Head × 1 长L 14550mm 宽W 2970mm 高H 2800mm 重量 Weight 12480kg
	专用副臂底节臂(含支架) Special Jib Butt × 1 长L 6290mm 宽W 1610mm 高H 1320mm 重量 Weight 3608kg
	专用副臂顶节臂 Fixed Jib Top × 1 长L 6420mm 宽W 1520mm 高H 2110mm 重量 Weight 1380kg
	臂端单滑轮 Boom Head Single Sheave × 1 长L 2812mm 宽W 1540mm 高H 1890mm 重量 Weight 605kg

说明 Notes

- 以上零部件运输形状为示意图，所标尺寸为设计值，不包括包装。
The above parts dimension is only for illustration, the dimension shown is design value, and does not include the package.
- 重量为设计值，由于制造误差，可能稍有不同。
The weight is design value, may have slight difference due to error in manufacture.

详细介绍

Brief Introduction

上 车

发动机

QUY500W选用沃尔沃公司生产的直列6缸、水冷、增压、中冷电喷环保型发动机，额定功率383 KW，额定转速1800rpm，符合欧洲工程机械II号排放标准，它具有结构紧凑、体积小、重量轻、功率大、油耗低、污染小、工作可靠、寿命长等显著特点，能满足履带起重机的各种工况。

控制系统

采用PLC程序控制，以保证液压系统的先导控制、力矩限制、高度限位等功能的实现，确保起重机安全可靠地运行。

液压系统

采用电比例控制，开闭式回路相结合，恒功率变量泵系统。
液压系统组成：起升回路，变幅回路，回转回路，防后倾回路，行走回路，辅助安装回路。
特点：起升回路、变幅回路、行走回路采用开式泵控系统。主泵为恒功率变量泵，电比例液压先导控制变量，可以同时满足多个执行元件动作要求。回转系统采用闭式系统，响应迅速，控制精准，开启和制动时动作平稳，且换向时无冲击。可以满足频繁换向和微动操作要求。

起升机构

主起升机构有两个，型号相同，单独驱动，大起重量时两个卷扬同步工作。卷扬采用片式常闭制动器，内藏式减速机，变量马达驱动。两个主起升机构共用一个整体式支架，与转台采用销轴连接，便于组装。副起升机构和主起升相同，用于臂端单滑轮的起升。钢丝绳均为德国进口不旋转钢丝绳，避免了钢丝绳打绞。

变幅机构

主臂变幅为一个双联卷筒独立驱动，塔臂变幅和超起变幅均为单卷扬独立驱动。主、副变幅机构采用内藏式减速机，片式常闭制动器。卷筒设有棘轮装置，以实现机械锁止制动，安全可靠。驱动马达、平衡阀、钢丝绳均为德国进口。

回转机构

布置在转台内侧前面，由两个行星减速机组成，与回转支承外啮合，液压缓冲，具有自由滑转机能。行星减速机，可常闭、片式制动器，工作可靠，维修方便。

回转支承

采用罗特艾德公司的三排滚柱式回转支承，质量稳定可靠。

Crane Superstructure

Engine

QUY500W uses VOLVO diesel engine, 6-cylinder in line, water-cooled, turbocharged, inter-cooled and electronic injection, rated output power 383kW, rated speed 1800rpm, emission in compliance with European Construction Machinery Stage II, it features compact structure, small size, light weight, strong power, low fuel consumption, little pollution, reliable work and long service life, can meet various working conditions for crawler cranes.

Control System

Adoption of PLC program control, to guarantee the realization of the hydraulic system functions of pilot control, load moment limit, hoist height limit, to ensure the safety and reliability for crane operation.

Hydraulic System

Electronic proportional control, with combination of close/open type circuit, constant power and variable displacement pump system.
Hydraulic system: winch, luffing gear, slewing gear, tower jib backstop, travel gear, auxiliary assembly system.
Features: winch, luffing gear, travel gear are of open type pump control system, main pump is constant power and variable displacement pump, electronic proportional hydraulic pilot controlled variable displacement, can meet the requirement of multiple actuator movement. Slewing gear is close type system, quick response, accurate control, stable starting and braking, and no impact for direction change, may satisfy operation of frequent direction change and fine motion control.

Winch

Two main winches of same model, with independent drive, and two winches synchronize for heavy load lifting; disc type constant closed brake, built-in speed reducer and variable displacement motor drive; two winches share one integrated bracket, and connected with turntable by pin shaft, easy for assembly. Auxiliary winch is the same as main winch, and used for boom head single sheave lifting. Winch wire rope is imported from Germany, no-twisting and no-turning.

Luffing Gear

Boom luffing gear is a twin drum independent drive unit, tower jib luffing gear and SL luffing gear is single winch independent drive unit. Main/auxiliary luffing gears use built-in speed reducer and disc type constant closed brake. The winch drum has a ratchet locking device to realize mechanical locking the boom, working safe and reliable. Drive motor, counterbalance valve, winch wire rope are all imported from Germany.

Slewing Gear

Slewing gear is arranged inside the front of turntable, made up by two planetary reducers, and internal meshed with slewing ring, hydraulic buffering, and with the function of free swing. Planetary reducer has a controllable constant-closed disc brake, reliable working and easy for maintenance.

Slewing Ring

Slewing ring is a 3-row roller type slewing bearing made by Rothe Erde, with reliable quality.

详细介绍

Brief Introduction

平衡重系统

平衡重系统包括转台平衡重、超起平衡重、车身平衡重。
转台平衡重：180t
平衡重箱2件 10t/件
平衡重块16件 10t/件
车身平衡重：42.6t
平衡重箱2件 1.3t/件
平衡重块4件 10t/件

操纵室

操纵室采用钢制框架结构，正面配置有整体式夹层玻璃，其余玻璃均为钢化玻璃。装有可调式座椅、按人机工程学布置的全套操纵仪表和控制装置，配置冷暖空调、音响、灭火装置、闭路监视系统等，宽敞舒适。工作时，操纵室可调俯仰角度，扩大视野，方便操作；运输时，操纵室可从侧方转到前方，减小运输宽度。

转台

转台是联系上下车的关键承载结构件，采用高强度钢板焊接而成的双侧“工”字梁框架复合结构，整体稳定性好。转台通过回转支承与下车进行联接。驾驶室、起升机构、变幅机构、发动机、桅杆、主臂及配重等分别与转台在不同部位进行联接。

下 车

下车包括车架、履带架、行走机构和车身配重。车架和履带架采用铰接式和伸缩式两种连接形式。铰接式销轴安装通过液压缸完成，履带架的拆装则可利用本机的桅杆滑轮吊装。伸缩式履带最大轨距为8200mm，最小轨距为5500mm，窄轨状态方便短距离风电转场需要。

车架

车架采用高强度钢板、箱形结构，中间设置横隔板，加强其抗扭刚度，结构简单，承载能力强，刚性好。

履带架

包括履带梁和四轮一带。履带梁采用箱形结构，和车架连接部位局部加强，中间设置横隔板。两个履带架对称设置，装有宽度为1.5m履带板，可同步操作，也可单独操纵，以实现直行和转弯。

行走机构

履带行走驱动采用德国进口的内藏式行星齿轮减速机，液压释放行走制动器，每个减速机由两个德国进口的轴向柱塞变量马达驱动。

行走速度

变量泵及变量马达可以实现高、低速两档无级变速，最高速度0.95公里/小时。行走时，设备运行平稳。

Counterweight System

Counterweight system consists of turntable counterweight, SL counterweight and car-body counterweight.
Turntable Counterweight: 180t
Counterweight box 2 pcs. 10t/pcs.
Counterweight 16 slabs 10t/slab
Car-body Counterweight: 42.6t
Counterweight box 2 pcs. 1.3t/pcs.
Counterweight 4 slabs 10t/slab

Operator's Cabin

Operator's cabin is steel frame structure, front windshield has overall type safety glass, other glass is hardened glass, equipped with adjustable seat, all kinds of ergonomic designed instruments and controls, vent type air-conditioner, CD player, fire extinguisher, and closed circuit monitoring system, spacious and comfortable. When the crane is in operation, the operator's cabin can be tilted upward to widen the field of vision. When the crane is in transportation, the operator's cabin can be turned from the side to the front so as to reduce the transport width.

Turntable

Turntable is key structural part linked with crane superstructure and crane carrier for load bearing, made of high strength steel plate and welded as compound structure of both sides "I" shaped beam frame, with excellent stability. Turntable is connected with crane carrier by slewing ring, and many mechanisms arranged on it, such as operator's cabin, winch, luffing gear, engine, gantry, mast, boom and counterweight.

Crane Carrier

Crane carrier includes car-body, track beam and car-body counterweight, car-body and track fram are articulated and retractable, the installation of pin shaft is realized by hydraulic cylinder, and the crane mast cylinder is used for crawler track assembly and disassembly. The max. retractable track gauge is 8200mm, and the min. retractable track gauge is 5500mm, and this min. track gauge is convenient and easy for transition transportation.

Car-body

Car-body is made of high strength steel, box-type structure, with cross panel installed in the middle to strengthen its stiffness of torsion resistance, simple structure, high loading capacity and well rigidity.

Crawler Track

Crawler track consists of track beam, drive sprocket, idler wheel, upper roller, lower roller and track pads. Crawler beam is box-type structure, the connection place to frame is strengthened partially, and cross panel is installed in the middle of it. Two crawler tracks are symmetrically arranged, with track pads of 1.5m, can be operated synchronously or independently to realize straight travel and turning around.

Travel Gear

Travel gear drive has German imported built-in planetary gear reducer and hydraulic release service brake, the speed reducer is driven by German imported axial piston variable displacement motor.

Travel Speed

Variable displacement pump and variable displacement motor can realize high/low two kinds of infinitely variable speed drive, max. speed 0.95km/h.

详细介绍 Detailed Introduction

作业装置

起重臂包括主臂和专用副臂。结构型式为中间等截面，两端变截面的四弦杆空间桁架结构，主弦杆采用进口高强度管材，腹杆采用国产优质管材，提高了臂架抗弯曲的能力。

工况

标准工况重型主臂工况
标准工况专用副臂工况
加强工况专用副臂

主臂

主臂为中间等截面、两端变截面的空间桁架式结构，钢管焊接，臂架顶部与根部用钢板加强，以利于传递载荷。主臂配置臂端单滑轮机构，主臂长度为24~84m。
组成：底节臂6m、卷扬节6m、6m中间节臂×2、12m中间节臂×3、12m拉板节×1、过度节臂10.5m，臂头。

专用副臂

专用副臂可安装在长度为78或84米主臂上，其安装角度为10°。
组成：专用副臂由一节固定副臂底节臂(6m)和一节固定副臂顶节臂(6m)组成。

桅杆

桅杆结构为箱形双臂结构,该结构整体稳定性好。在自拆装时，可组成桅杆吊，用于拆装整机的大型结构件。

吊钩

标准配置：500t吊钩、300t吊钩、100t吊钩、50t吊钩、12t吊钩

注：500t吊钩可以分解成2个250t吊钩
300t吊钩可以分解成2个150t吊钩

安全装置

安全装置包括力矩限制器、转台回转锁销装置、起重臂防后翻装置、起升高度限位装置、风速仪、水平仪、液压系统的溢流阀、平衡阀、双向液压锁、回转警告、行走警告等。

应急功能

系统程序崩溃时，可采用控制柜中的翘板开关把整机操作到安全状态。此时所有安全保护功能不起作用。

力矩限制器

检测功能：力矩限制器能自动检测出起重臂的角度、起重载荷，
显示功能：实时的显示当前实际载荷，工作半径，起重臂角度。
警示功能：如果检测到实际载荷超过额定载荷，起重臂超过极限角度，力矩限制器发出报警并限制当前动作。

Lifting Operation Parts

Lifting boom comprises main boom and special jib, the structural type is lattice structure of four tubular chords with intermediate equal section and two end variable section; the main boom chord is made of imported high quality tube, and web rod is made of domestic high quality tube, with the ability for improving torsion resistance.

Working Conditions

Standard Mode Heavy Boom Working Conditions
SL Mode Special Jib Working Conditions
Strengthen Mode Special Jib

Main Boom

Main boom is lattice structure of intermediate equal section and two end variable section, welded by steel tube, boom top and boom foot reinforced by steel plate for load transfer. Main boom is equipped with boom head single sheave, and main boom length is 24~84m.
Construction: 6m boom butt, 6m winch section, 6m×2 boom insert, 12m×3 boom insert, 12m×1 pendant section, 10.5m boom extension, and boom head.

Special Jib

Special jib can be attached on the boom length of 78m or 84m, with offset angle of 10°.
Construction: special jib comprises one section of fixed jib butt (6m) and one section of fixed jib top (6m).

Mast

The mast is box-type structure of twin tubular chord, with good overall stability. When carrying out crane assembly/disassembly, the mast can be combined with other lifting parts for mounting and removing large crane structural parts.

Hook Block

Standard equipment: 500t capacity hook block, 300t capacity hook block, 100t capacity hook block, 50t capacity hook block, and 12t capacity hook block.
Note: 500t capacity hook block may be divided into two 250t capacity hook blocks.
300t capacity hook block may be divided into two 150t capacity hook blocks.

Safety Devices

Safety devices comprise: load moment limiter, turntable lock pin, boom backstop, hoist limit switch, anemometer, level gauge, hydraulic overflow valve, counterbalance valve, two-way hydraulic lock, slewing warning lamp and travel warning lamp, etc.

Emergency Function

When a breakdown occurs in the system, a toggle switch on control panel may be used to control the whole machine into safe state, at this time all safe protections have no use.

Load Moment Limiter

Detection function: automatically detect boom angle and lifting load.
Display function: real time display current actual load, working radius and boom angle.
Warning function: automatically send out warning and stop crane operation when detecting actual load exceed total rated load and boom out of limit angle.

详细介绍 Detailed Introduction

主、副提升过卷装置

当主、副卷扬上升到一定高度时候，仪表板上的过卷保护指示灯亮，同时力矩限制器停止起升动作。

主、副提升过放装置

此保护功能由安装在卷筒内部接近开关检测到卷筒上的钢丝绳剩下三卷时候，仪表板上的指示灯亮，同时力矩限制器自动停止起升落动作。

安全保护开关

该安全保护开关放在手柄前侧，此开关没有按下时候，所有动作信号被屏蔽，手柄不起作用。防止上下车身体碰撞手柄产生误操作。

棘爪锁止装置

该功能用于锁定变幅卷扬，起重臂降落的时候必须打开该装置，否则不能降落，用于保护臂架在非工作时安全停放。

起重臂角度限制

主起重臂仰角在85°时，起重臂被停止起升，由力矩限制器和行程开关双级控制。主起重臂在仰角小于30°时停止起重臂降落，由力矩限制器控制。塔臂由限位开关控制上限位和下限位。

监控系统

由4个摄像头和一个监视器组成，分别监视主、副卷扬和变幅卷扬。

声光报警器

在履带起重机移动或做回转动作的时候灯闪烁并且发出声音报警。

力限器三色报警灯

由三种颜色组成，负载在90%以下时“绿灯”亮，表示起重机在安全区域运行，负载在90%-100%的时候“黄灯”亮，表示起重机在已接近额定载荷范围，负载在100%-105%以上时“红灯”和“黄灯”同时亮，表示起重机已经超载。在危险区域，控制系统自动切断起重机向危险的方向运行。

照明灯

装置在转台前方、臂架上和操纵室内，用于夜间工作提供照明。

示高灯

安装在臂架顶部，作为高空警示。

风速仪

实时检测当前风速，传送到操纵室的监视器上，提醒司机操作的安全性。

Main/Auxiliary Winch Over-Wound Protection Device

When main/auxiliary winch hoists up to a certain lifting height, an over-wound warning lamp on instrument panel lights on, at the same time, load moment limiter stops crane hoisting up operation.

Main/Auxiliary Winch Over-Release Protection Device

When access switch in winch drum detects only three turns of wire rope left on the drum, an over-release warning lamp on instrument panel lights on, at the same time, load moment limiter stops crane hoisting up operation.

Safe Protection Switch

At the front of joystick installed a safe protection switch, when the switch is pressed down, all crane movement signals have been shielded, and the joystick is useless. This switch can be used to prevent malfunction when operator accessing the cabin and toughing the joystick.

Winch Ratchet Locking Device

Winch drum has a ratchet locking device, and it must be turned on when lowering boom, otherwise boom cannot be lowered. The device is used to stow the boom for safety.

Boom Angle Limit

When boom angle is more than 85°, both load moment limiter and hoist limit switch stop boom raising. When boom angle is less than 30°, load moment limiter stops boom lowering and give a sound warning. The hoist limit switch and load moment limiter may control the tower jib upper/lower limit position.

Monitor System

The monitor system contains 4 cameras and 1 monitor display, respectively keeping watch on main & auxiliary winches, and luffing winch.

Audio/Video Warning

When crawler crane is moving and slewing, there is light and sound for warning.

Tricolor Warning Lamp

The lamp comprises 3 colors, when crane loading is below 90% of total rated lifting load, "Green Lamp" lights on to indicate crane is running in safety area; when crane loading is in 90%~100% of total rated lifting load, "Yellow Lamp" lights on to indicate crane is close to total rated lifting load; when crane loading is above 100%~105% of total rated lifting load, "Red Lamp" and "Yellow Lamp" light on at the same time to indicate crane is overload; In dangerous area, control system can automatically cut off crane movement to dangerous direction.

Illumination Lamp

There are illumination lamps at front of turntable, on boom and inside operator's cabin for night operation.

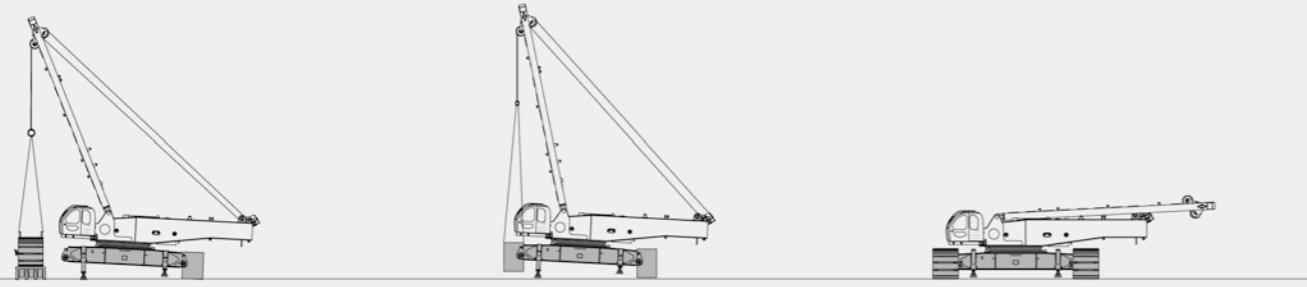
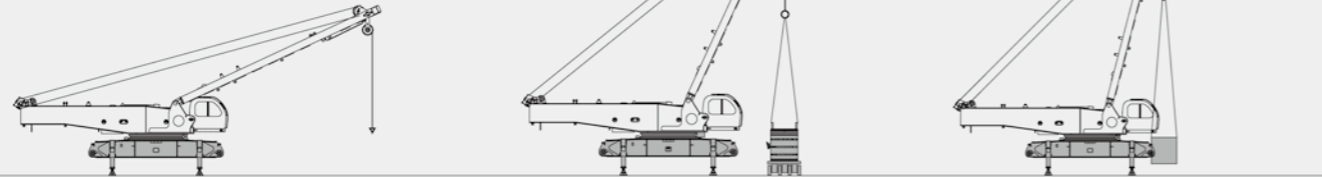
Height Mark Lamp

Boom tip has a height mark lamp for high level operation warning.

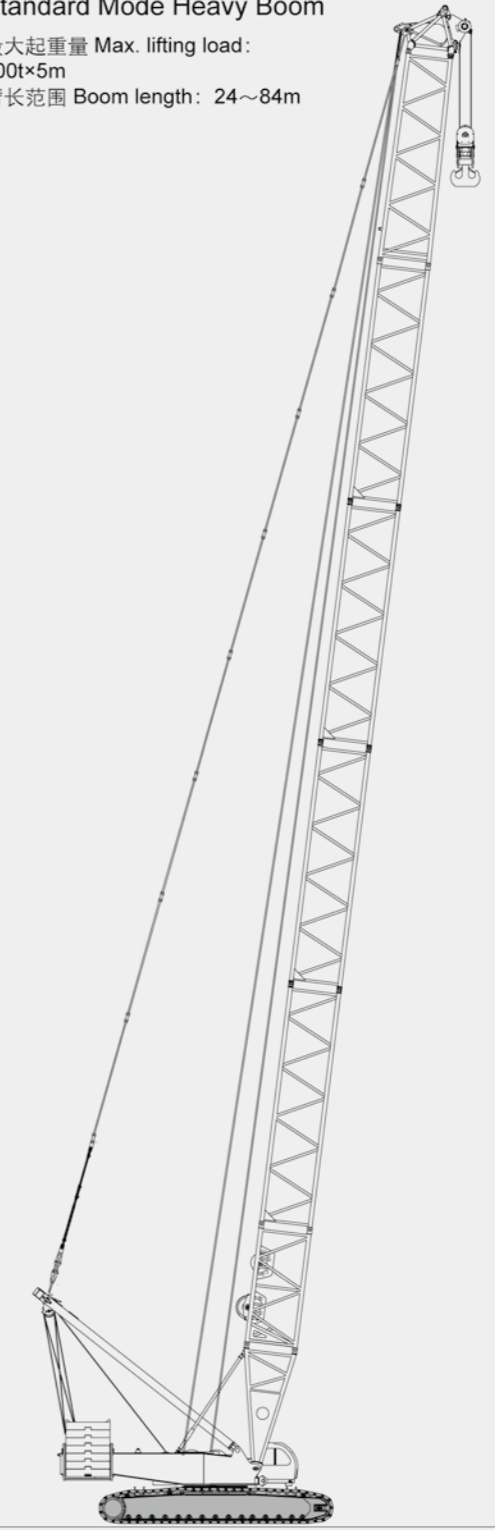
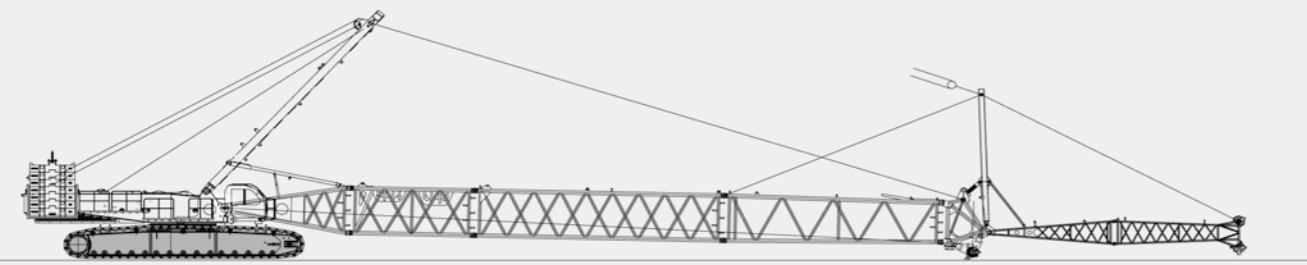
Anemometer

Anemometer at boom head can detect current wind speed and send wind signal to a monitor in operator's cabin to alert operator for safety.

标准工况重型主臂
Standard Mode Heavy Boom
最大起重量 Max. lifting load:
500t×5m
臂长范围 Boom length: 24~84m

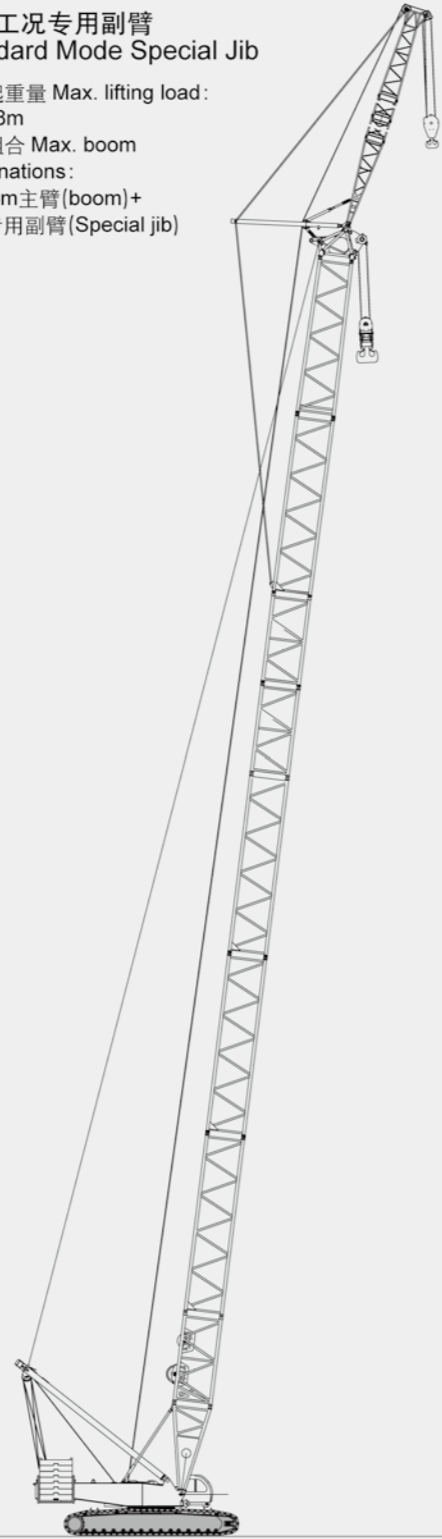


专用副臂安装示意图
Fixed Jib Installation Illustration



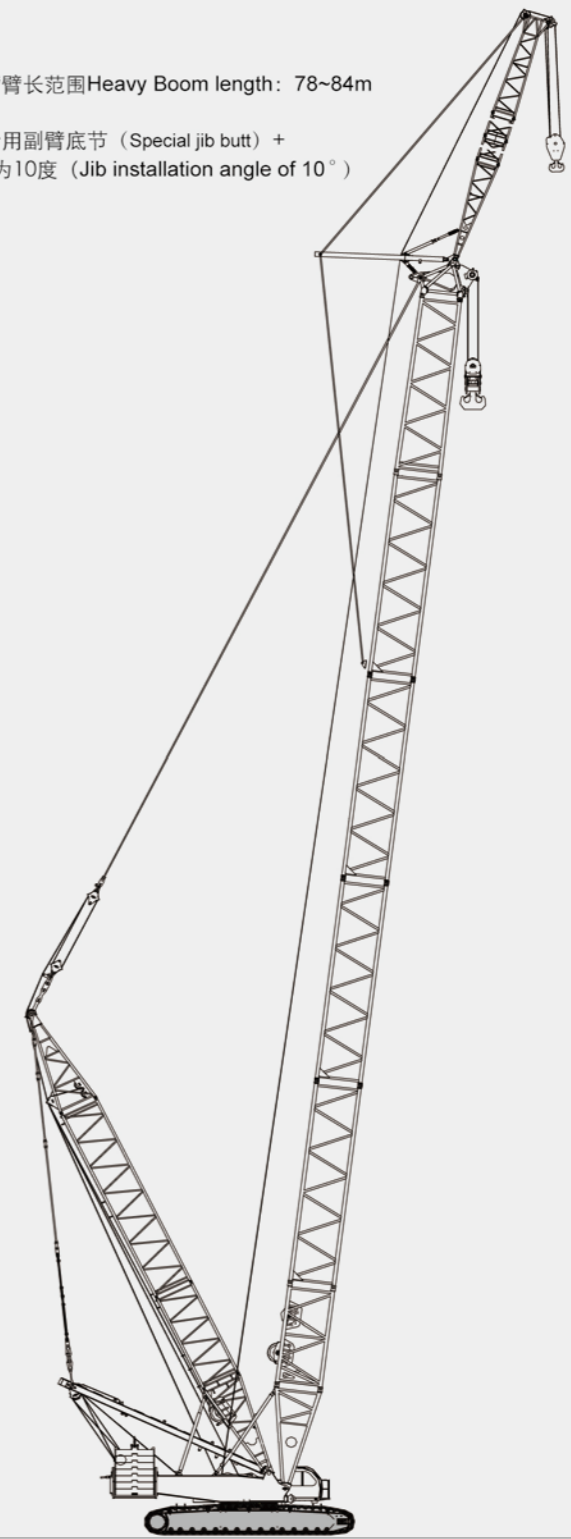
标准工况专用副臂
Standard Mode Special Jib

最大起重量 Max. lifting load:
95t×18m
最大组合 Max. boom
combinations:
78~84m主臂(boom)+
12m专用副臂(Special jib)



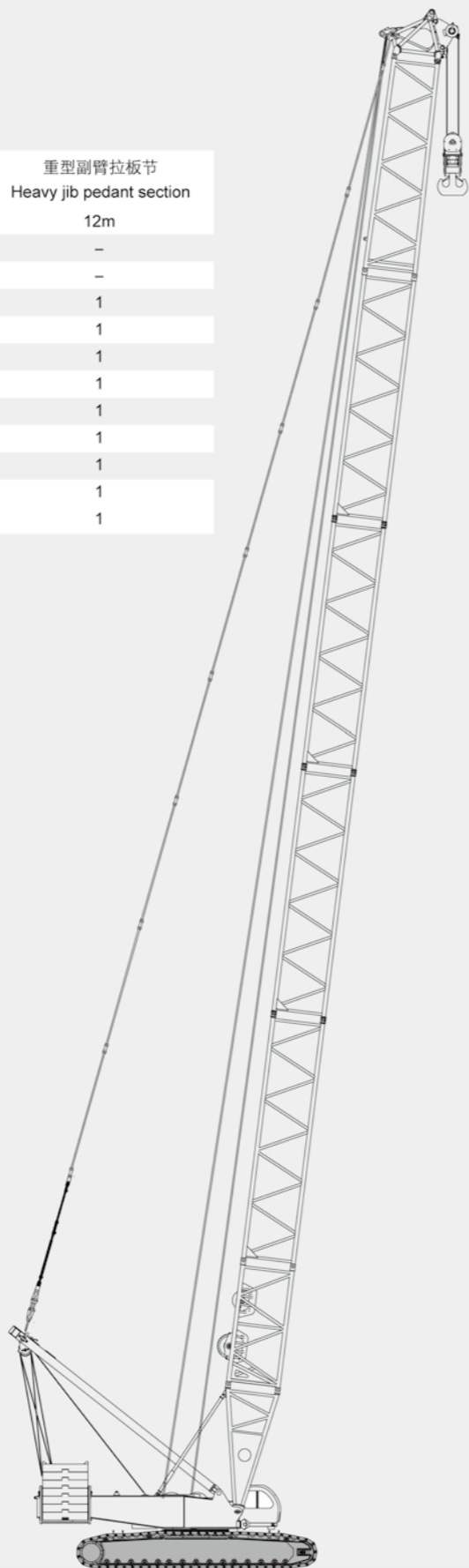
标准工况加强副臂
Strengthen Mode Improved Jib

最大起重量 Max. lifting load: 105t x18m 重型主臂臂长范围 Heavy Boom length: 78~84m
最大组合 Max. boom combinations:
12m加强专用副臂 (Strengthen special jib) +6mx1专用副臂底节 (Special jib butt) +
6mx1专用副臂顶节 (Special jib top) +副臂安装角度为10度 (Jib installation angle of 10°)

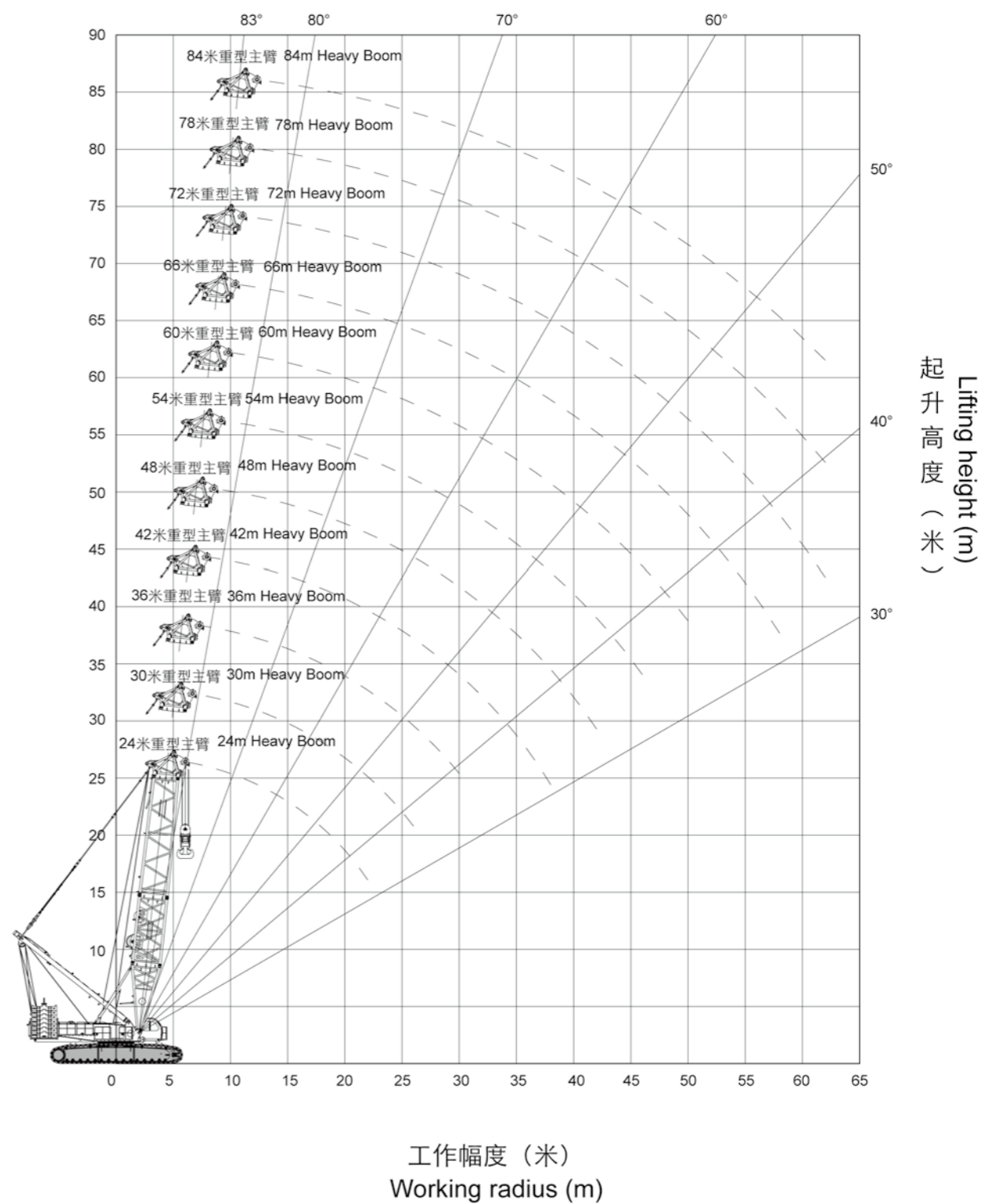


标准工况重型主臂臂节组合/重型主臂 Standard Mode Heavy Boom Combinations/Heavy Boom

主臂长度 Boom length (m)	重型主臂中间节 Heavy boom insert		重型副臂拉板节 Heavy jib pedant section
	6m	12m	12m
24	-	-	-
30	1	-	-
36	-	-	1
42	1	-	1
48	2	-	1
54	1	1	1
60	2	1	1
66	1	1	1
72	2	1	1
78	1	2	1
84	2	2	1



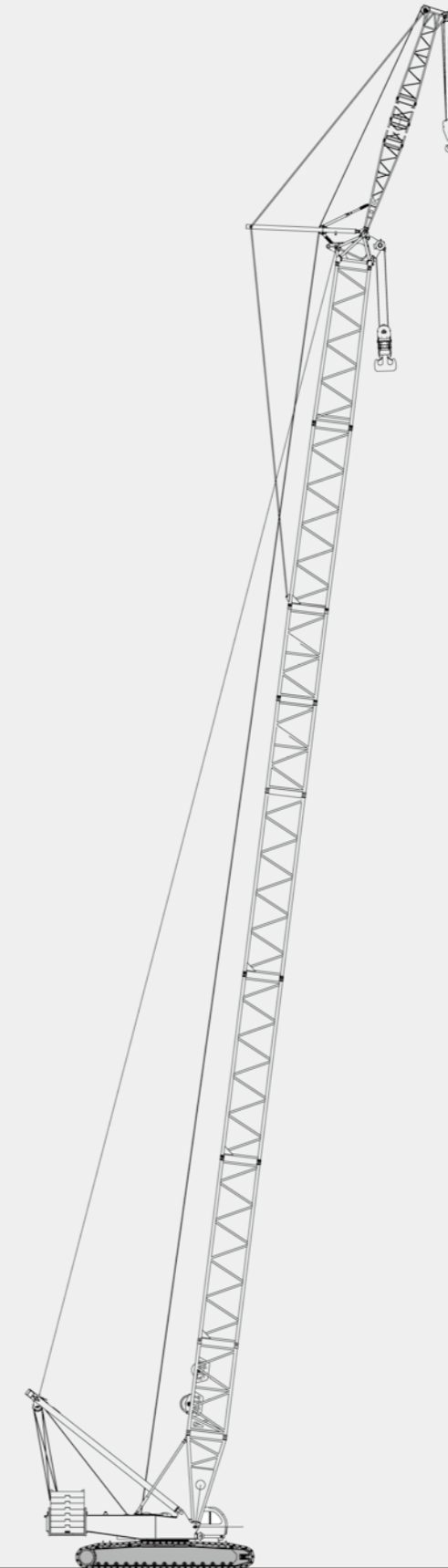
标准工况重型主臂作业范围 Standard Mode Heavy Boom Working Area



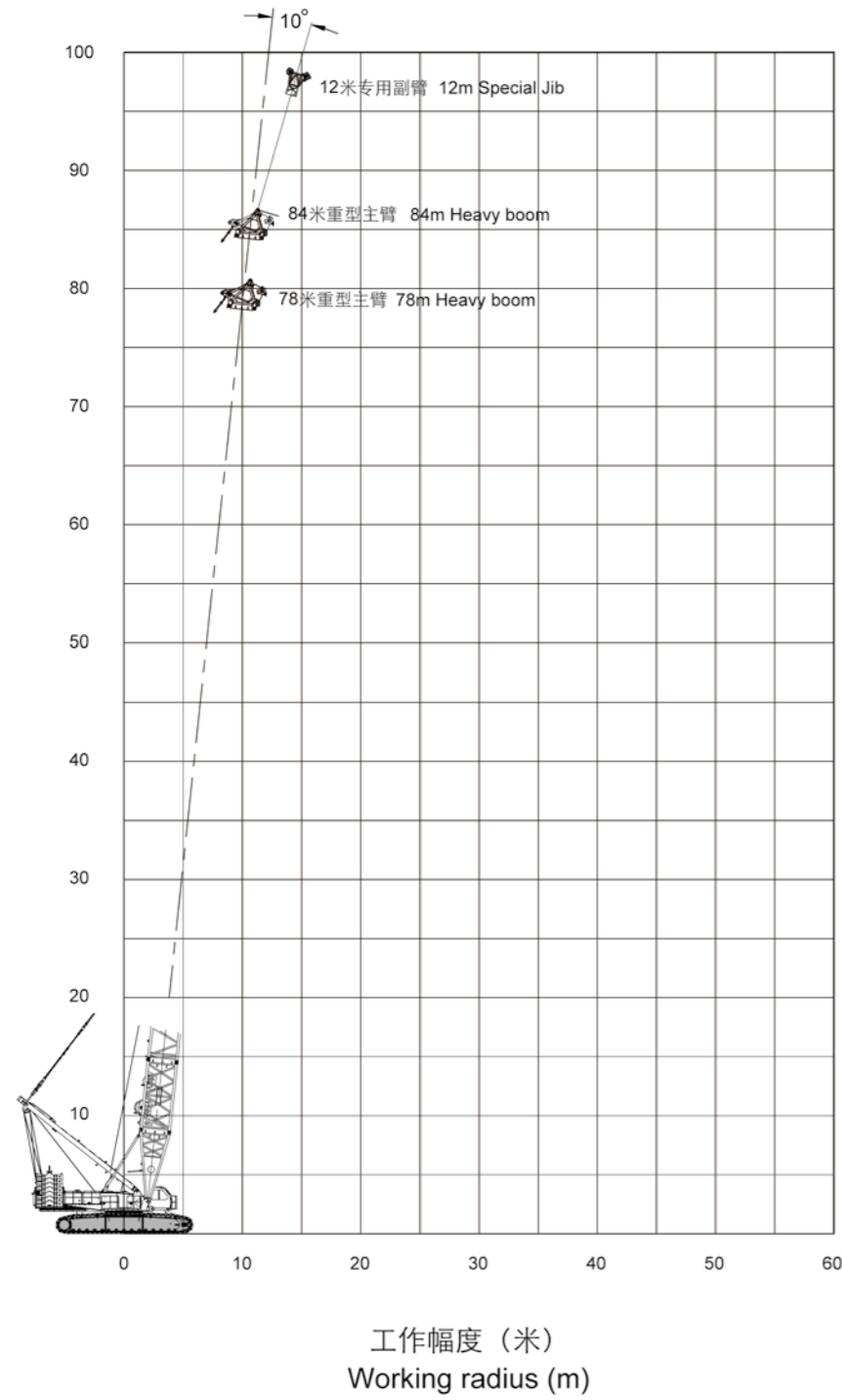
标准工况重型主臂载荷表 Standard Mode Heavy Boom Lifting Load Chart

幅度 Radius (m)	臂长 Boom length (m)										
	24	30	36	42	48	54	60	66	72	78	84
5	500.0										
6	450.0										
7	360.0	360.0									
8	320.0	320.0	320.0								
9	280.0	280.0	280.0	275.0	272.0						
10	240.0	240.0	240.0	240.0	240.0	235.0					
11	220.0	215.0	215.0	215.0	212.0	205.0	200.0	190.0			
12	190.0	190.0	190.0	190.0	190.0	185.0	180.0	170.0	165.0		
14	160.0	160.0	155.0	152.0	150.0	150.0	150.0	140.0	135.0	125.0	100.0
16	132.0	132.0	132.0	126.0	125.0	125.0	122.0	115.0	115.0	115.0	92.0
18	110.0	110.0	110.0	110.0	107.0	103.0	102.0	100.0	100.0	98.0	85.0
20	97.0	96.0	95.0	92.0	92.0	92.0	90.0	86.0	85.0	82.0	80.0
22	85.0	82.0	82.0	80.0	80.0	80.0	78.0	75.0	74.0	73.0	70.0
24		72.0	72.0	70.0	70.0	70.0	70.0	68.0	64.0	63.0	60.0
26		65.0	65.0	62.0	62.0	62.0	62.0	60.0	57.0	56.0	52.0
28			60.0	57.0	56.0	55.0	55.0	55.0	51.0	50.0	45.0
30			55.0	52.0	50.0	50.0	50.0	50.0	47.0	45.0	40.0
34				43.0	42.0	42.0	42.0	40.0	40.0	37.0	34.0
38				36.0	35.0	35.0	35.0	35.0	33.0	32.0	26.0
42					30.0	30.0	28.0	28.0	27.0	25.0	22.0
46						25.0	24.0	23.0	23.0	20.0	17.0
50							20.0	19.0	18.0	16.0	14.0
54								16.0	14.0	13.0	11.0
58								12.0	12.0	10.0	9.0
62									9.0	8.0	7.0

标准工况专用副臂 Standard Mode Special Jib



专用副臂10°时 Special Jib angle at 10°



起升高度 (米)
Lifting height (m)

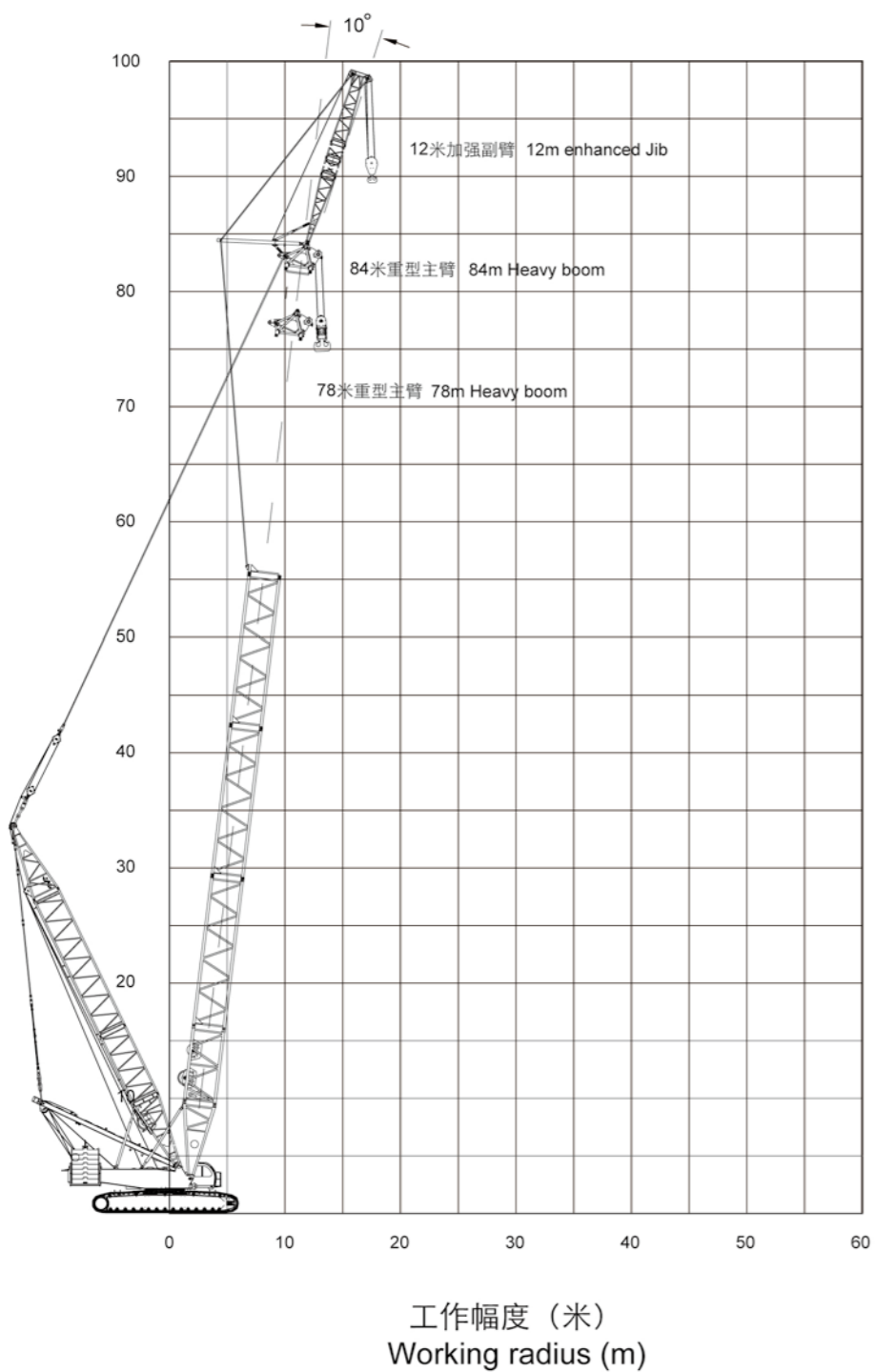
工作幅度 (米)
Working radius (m)

主臂长度 Boom length (m)	主臂78米 Boom length 78m	主臂84米 Boom length 84m
副臂长度 Jib length (m)	12	12
幅度 Radius (m)	副臂安装角度 Jib angle (°)	
	10	10
18	95.0	95.0
20	88.0	85.0
22	79.0	78.0
24	69.0	67.0
26	62.0	60.0
28	55.0	53.0
30	50.0	47.0
32	44.0	43.5
34	40.0	38.5
36	37.0	35.5
38	34.0	32.5
40	31.0	29.5
42	28.0	27.5
44	26.0	25.5
46	24.0	23.0
48	22.0	21.0
50	19.5	18.0

加强工况专用副臂作业范围 Strengthen Mode Enhanced Jib Working Area

加强工况专用副臂工况载荷表 Strengthen Mode Enhanced Jib Lifting Load Chart

加强专用副臂10°时Special Jib angle at 10°



起升高度 (米)
Lifting height (m)

主臂长度 Boom length (m)	主臂78米 Boom length 78m	主臂84米 Boom length 84m
副臂长度 Jib length (m)	12	12
幅度 Radius (m)	安装角度 Jib angle (°)	
	10	10
18	105.0	105.0
20	97.0	95.0
22	86.0	84.0
24	77.0	75.0
26	69.0	67.0
28	63.0	61.0
30	57.0	55.0
32	52.0	50.0
34	47.0	45.0
36	43.0	41.0
38	39.0	37.0
40	36.0	34.5
42	33.0	31.0
44	29.0	27.0
46	27.0	25.5
48	24.0	22.5
50	22.0	20.0

载荷表说明：

- 载荷表中额定起重量，指在给定的臂架长度、工作幅度条件下，重物自由悬挂，在坚实、平坦地面作业所能保证的最大起重量。作业者须视各种不良条件（如地面松软或不平、风力、侧面负荷、摆动作用、多台起重机合力起吊）限制或降低起重机的起重量；
- 载荷表中额定起重量包括吊钩、钢丝绳、和其它所有吊具的重量；
- 载荷表中没有列出额定值的空白区，不允许将起重机用于该区所对应的起重作业；
- 载荷表中起重量为带上车全配重和下车全配重的起重量；
- 使用主臂可以配置臂端单滑轮机构，臂端单滑轮机构的起重量为性能表中相应的额定起重量减去臂端单滑轮机构、12t吊钩和吊具的重量；
- 臂端单滑轮机构的最大起重量（包括吊钩、吊具和起升钢丝绳）不准超过12t，性能载荷表中的额定起重量小于12t时按性能表起吊。

Notes on Lifting Load Chart:

- The total rated lifting loads shown in above tables are the max. lifting capacity based on the condition that crane set up on firm and level ground with given boom length, radius and load, crane operator shall limit or reduce lifting loads according to variable working conditions (soft or uneven ground, wind, side loading, slewing action, lifting with one more cranes).
- The total rated lifting loads include the weight of hook block, wire rope and other slings.
- The blank area in above tables means crane operation is not allowed corresponding to these areas.
- The total rated lifting loads are the lifting capacity for the crane with superstructure counterweight and carrier counterweight.
- Boom can be equipped with a boom tip single sheave, which lifting load is the total rated lifting loads in above table decrease the weight of single sheave, 12t capacity hook block and slings.
- The max. rated lifting load for single top is 12t (include the weight of hook block, slings and hoist wire rope), if rated lifting load in above tables is less than 12t, load lifting is according to the table.